

# PWA Installation Guide

December 6th, 2021

## Overview

The PWA is a newer version of our current mobile application. It is no longer a native app, so it is not found on the app store. It is a website application that users can save to their mobile device.

The application is available at [pwa.theuniformsolution.com](https://pwa.theuniformsolution.com)

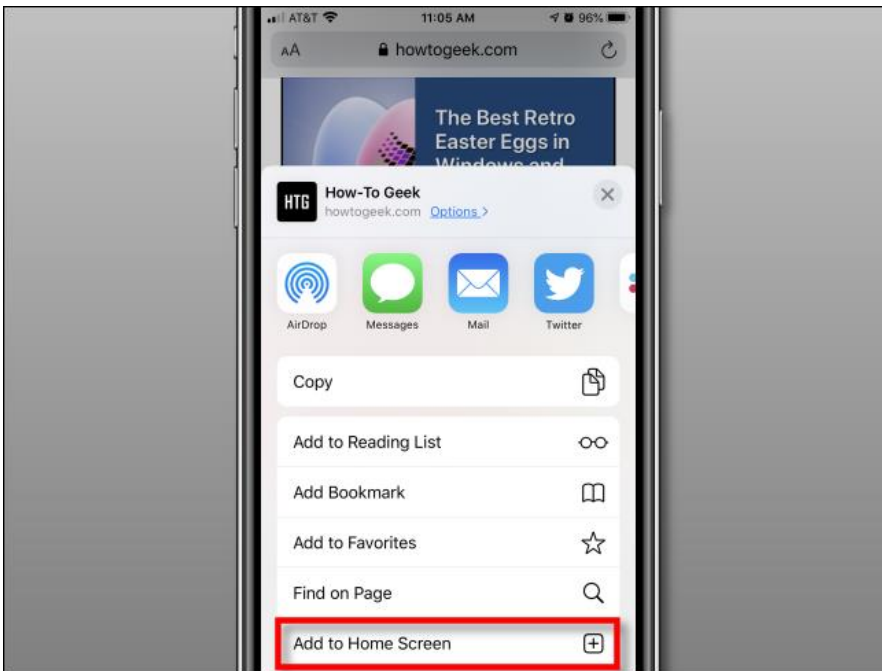
2

## iOS Devices

1. Open **Safari** (*it must be installed using Safari*)
2. Go to [pwa.theuniformsolution.com](http://pwa.theuniformsolution.com)
3. Find and locate the **share** button.



4. Select **Add to Home Screen**



5. There will now be an icon to open the app in a native view on their Home Screen.

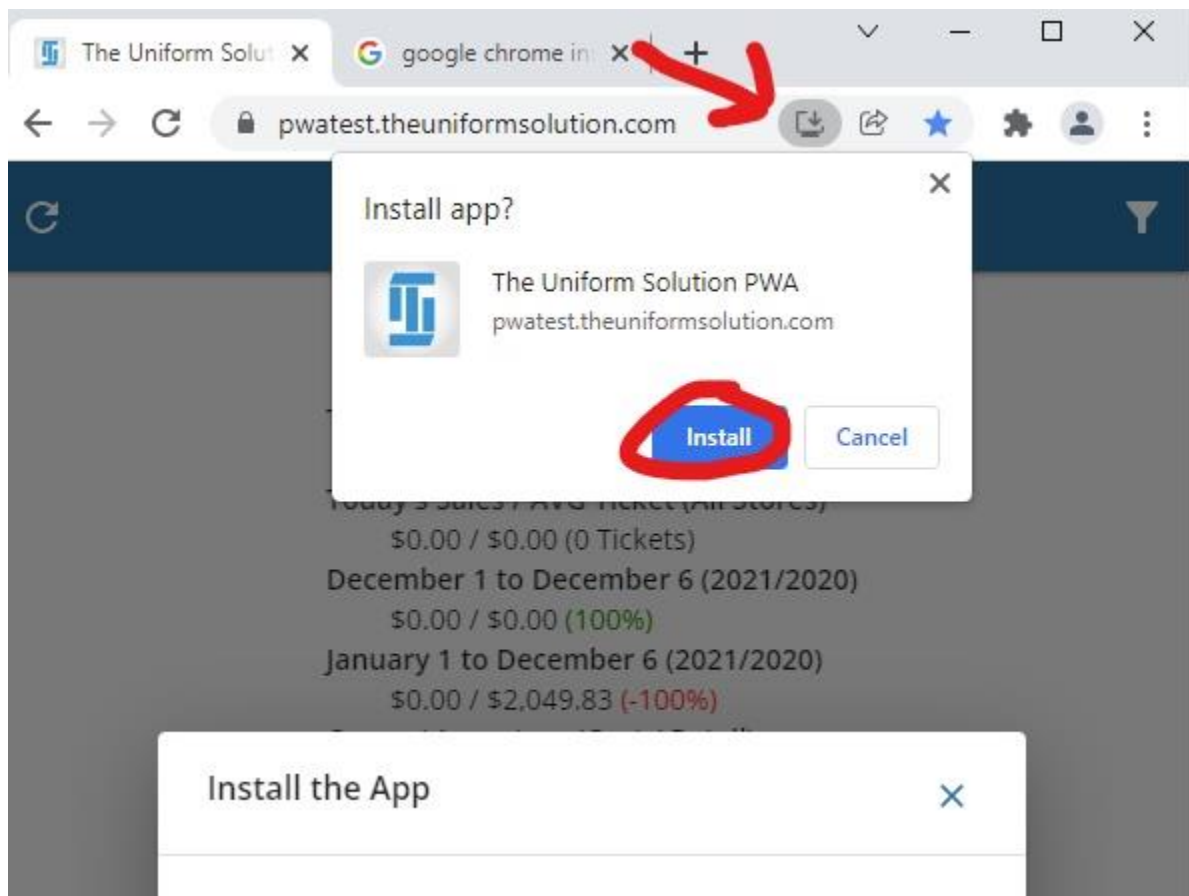
3

## Android Devices

1. Open **Microsoft Edge**
  - a. Google Chrome also works.
2. Go to [pwa.theuniformsolution.com](http://pwa.theuniformsolution.com)
3. Tap the **overflow (...)** button.
4. Tap **'Add to Home Screen'**.

## Desktop Computer

1. Open **Google Chrome**
2. By the url at the top of the page, select the Installation Icon.
3. Then click Install.



4. This will add the PWA as an installed application.